

100



All advantages at a glance:


- Base wall panel made of 2 mm thick aluminium
- Robust powder coating
- Standard colour: RAL 9016 „traffic white“
- On request: offer of the full colour spectrum - suitable for any living ambience


IVT AT A GLANCE

- ✓ Subsidiary of the global active Würth-Group
- ✓ Modern production facilities at the headquarters in Rohr near Nürnberg
- ✓ Direct sales without intermediaries
- ✓ 24 h delivery service in Germany and Austria
- ✓ Competent support on site
- ✓ Site instruction and supervision
- ✓ Planning support
- ✓ B2B Online-Shop

02/2023
Reproduction, also in extracts only by approval
© by IVT GmbH & Co. KG Printed in Germany

IVT GmbH & Co. KG

 Gewerbering Nord 5, 91189 Rohr, Germany

 Order phone: +49 9876 9786-97
Technical support: +49 9876 9786-60

@ verkauf@ivt-group.com

 www.ivt-group.com

IVT - Skirting radiators

Simple and straightforward - Energy saving and uniform heat



www.ivt-group.com

Heating with skirting radiators



IVT-SHL-3D



IVT-SHL-3 - only 30 mm thin

Natural and pleasant warmth

IVT skirting radiators provide a natural radiation heat that humans feel as particularly pleasant and soothing.

All advantages at a glance:

- Pleasant radiation heat thanks to heated walls.
- Low exposure to micro dust.
- Quick regulation with distribution system for heating circuit.
- Energy saving compared to radiator heating.
- Low amount of water in the heating elements.
- Consistent room temperature.
- Prevents the formation of condensation and mould.

Installing the skirting radiators



Installation of wall panel



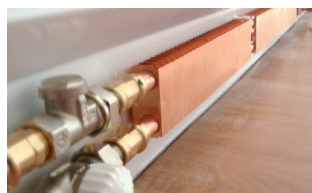
Installation of pipe clip



Deflection



Corner model with Deflection compensator



Inbuilt pipe register

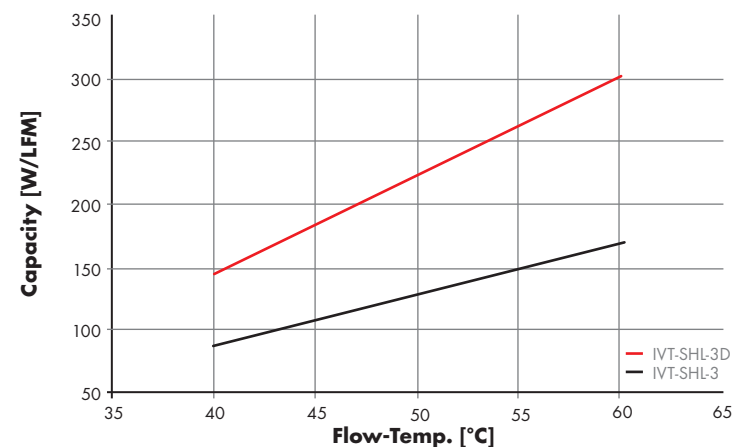


Fixation of plastic bracket at the panel

Assembly instructions:

- Maximum register length per heating circuit 13 m for type IVT-SHL-3 resp. 7 m for type IVT-SHL-3D.
- Elements can be cut to any dimension, connection with standard soldering or press fittings.
- For length > 8 m, compensators must be installed between two registers. If there is no possibility of length expansion, a compensator must also be installed in a corner from a register length of 3 m.
- Difference in temperature flow – return Δt approx. 5 K.
- Regulation possible via thermostatic valve to be built in on site or via electronic room temperature controllers with distributor installation.
- Distance between the retaining clips approx. 50 cm, for edges approx. 15 cm distance to the wall.

Performance data



Easy way to determinate the heating power

The skirting radiators are available in two standard profile shapes: IVT-SHL-3 and the particularly powerful IVT-SHL-3D (double). Use the following diagram to determinate the heating power simple and quickly.

TYPE	Flow-Temp. [°C]	Capacity [W/LFM]
IVT-SHL-3	40	88
	45	105
	50	132
	55	150
	60	178
IVT-SHL-3D	40	149
	45	178
	50	220
	55	255
	60	302

related to a room temperature of 20°C

- Example: The heat requirements of a room are 800 W, flow temp. 50 °C, Type IVT-SHL-3.
- Conclusion: Capacity per RM 132 W/m, Heating register length = 6,1 m.



Click here to go
directly to the article
overview!